

Press Release

The logo for WaveMotion Connect Days features the text 'WaveMotion' in white, 'CONNECT' in a large, stylized font with a blue-to-purple gradient, and 'Days' in white. The text is centered between two glowing, translucent hands. The top hand is purple and the bottom hand is blue, both appearing to reach towards each other. The background is black.

# WaveMotion CONNECT Days

Αθήνα, 03.04.2026

**WaveMotion**  
Technology · Aesthetics · Design

WaveMotion Connect Days:  
Where technology, sound, and lifestyle come together.

*WaveMotion presents a new tech-driven concept.*

WaveMotion presents WaveMotion Connect Days, a new experiential concept that redefines the way people interact with technology.

More than just an event, WaveMotion Connect Days functioned as a dynamic ecosystem showcase, where converging technologies — from smart home solutions to premium audio and advanced visual systems — came together in a unified experiential environment. The first stop was Athens, at The Fiction Hotel in Marousi, marking the launch of the concept.

At the heart of the event were leading brands shaping the market: Dreame and Duux are redefining the concept of the smart home, JBL, Harman Kardon, and KEF are evolving the audio experience, while XGIMI is bringing new standards to home and portable projection. Through live demos, real-use scenarios, and interactive setups, WaveMotion Connect Days transformed technology from a product into an experience, highlighting its practical value in today's connected environment.

At the same time, the concept served as a meeting space for the market ecosystem, fostering networking and connections across different sectors of the tech and lifestyle landscape. The event brought together media representatives, partners, and selected creators from the technology and lifestyle fields, enhancing the conversation around the connected lifestyle.

With a central focus on connecting—not just between devices, but also between people and ideas—WaveMotion Connect Days highlight how the connected ecosystem shapes everyday life today and in the future.

“We designed something different.

With WaveMotion Connect Days, we aimed to strengthen our connection with our Partners’ ecosystem, creating a space where ideas, together with technology, can further evolve collaborations.”

— Nikolas Tziralis, CEO, WaveMotion

The event took place in Athens and will continue in Thessaloniki on 18/04 and in Nicosia as SPARTILIA LTD., creating a multi-city tech platform.



#### **About WaveMotion A.E.**

WaveMotion is a publicly traded technology import company based in Athens, operating in the fields of smart electronics, high-tech products, audio, and visual systems. The name WaveMotion evokes concepts such as sound, light, image, power, speed, and entertainment. Just as waves move continuously and rapidly, technology evolves at the same pace in audio, visual systems, telecommunications, and computing. WaveMotion’s mission is to provide the Greek market with high-tech products that combine cutting-edge technology with aesthetics and modern design. Today, WaveMotion officially distributes in Greece the following international brand names, which are leaders in their respective fields: Harman/Kardon, JBL, KEF, XGIMI, Dreame, Duux, and Native Union



The philosophy of modern smart living is based on creating a connected environment that adapts to the user's needs, offering comfort, efficiency, and an improved quality of life. Within this framework, Duux provides advanced air treatment solutions that actively contribute to creating a healthy and balanced indoor space. With products that combine technology, functionality, and minimal design, Duux integrates seamlessly into the modern home, enhancing daily life by controlling air quality and creating a more pleasant living environment.

At the heart of smart living with Duux are the Whisper Flex 2 Smart, Elevate Smart Tower, and Bright 2 Smart Air Purifier. The Whisper Flex 2 Smart is a compact, high-performance fan, ideal for small spaces, featuring smart controls and remote management. The Elevate Smart Tower is a tower fan with a minimal design, providing cooling and smart features for larger areas. The Bright 2 Smart Air Purifier is a compact air purifier with a triple HEPA filter, designed for efficient air cleaning and intelligent operation in indoor spaces. With these products, Duux combines technology, functionality, and minimal design to create an environment that adapts to the user's needs, making smart living truly complete.



# DREAME

Dreame is a leader in the smart home appliances market, offering products that combine high performance, technology, and ease of use. At the core of its lineup are robotic vacuum cleaners, stick vacuums, wet & dry cleaning devices, and personal care products, covering every user need for cleanliness and care.

At the same time, Dreame is expanding its ecosystem into small domestic appliances (SDA) such as air fryers, coffee makers, and mixers, as well as major domestic appliances (MDA) like refrigerators, ovens, and washing machines, bringing smart functionality, technology, and minimal design to every aspect of the modern home. With automation, smart connectivity, and ergonomic design, Dreame turns everyday chores into easier, faster, and more enjoyable experiences, enhancing modern smart living

At the heart of Dreame's robotic solutions is the X50 Ultra Complete Robot Vacuum & Mop, an all-in-one cleaning system that combines powerful suction of up to 20,000 Pa, AI navigation with camera and LiDAR for precise mapping, and an automatic cleaning station that empties, washes, and dries the mops on its own. With the unique ProLeap technology, the vacuum can overcome obstacles up to ~6 cm, such as rugs and small steps, delivering deep cleaning on every surface.



It is a fully automated, smart, and powerful system, designed to simplify home cleaning and integrate seamlessly into Dreame's smart living ecosystem.

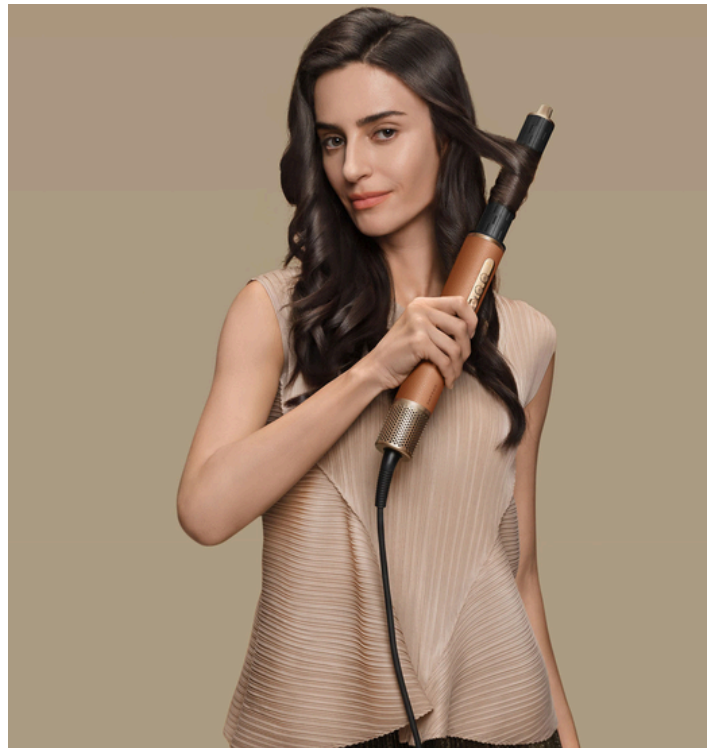
# DREAME

Another advanced solution from Dreame is the Wet & Dry G10 Pro, a 2-in-1 vacuum and mop that cleans both wet and dry messes simultaneously. With a suction power of 16,000 Pa, it delivers effective everyday cleaning on hard floors. The built-in self-cleaning mechanism automatically cleans the brush and tubes at the touch of a button, eliminating contact with dirt and saving time. It is a smart, practical, and value-for-money solution, ideal for modern smart living.



Dreame's ecosystem also includes personal care and styling products, such as the AirStyle Pro Hair Styler, a 7-in-1 tool for drying, straightening, curling, and anti-frizz styling, and the Aero Straight Pro, a 2-in-1 straightener with drying function that adapts via AI and app support according to hair type.

These products combine power, technology, and hair protection, offering smart and personalized styling for everyday use.



# DREAME

Dreame's ecosystem also includes smart kitchen solutions, such as the Ecceluxe Slim Fully Automatic Espresso Machine, which delivers everything from espresso to cappuccino at the touch of a button; the Tasti Air Fryer, a 5-in-1 air fryer with advanced hot-air circulation for healthier cooking; and the SF25 Food Waste Disposer, which converts organic waste into dry residue, reducing volume and making daily life easier.

